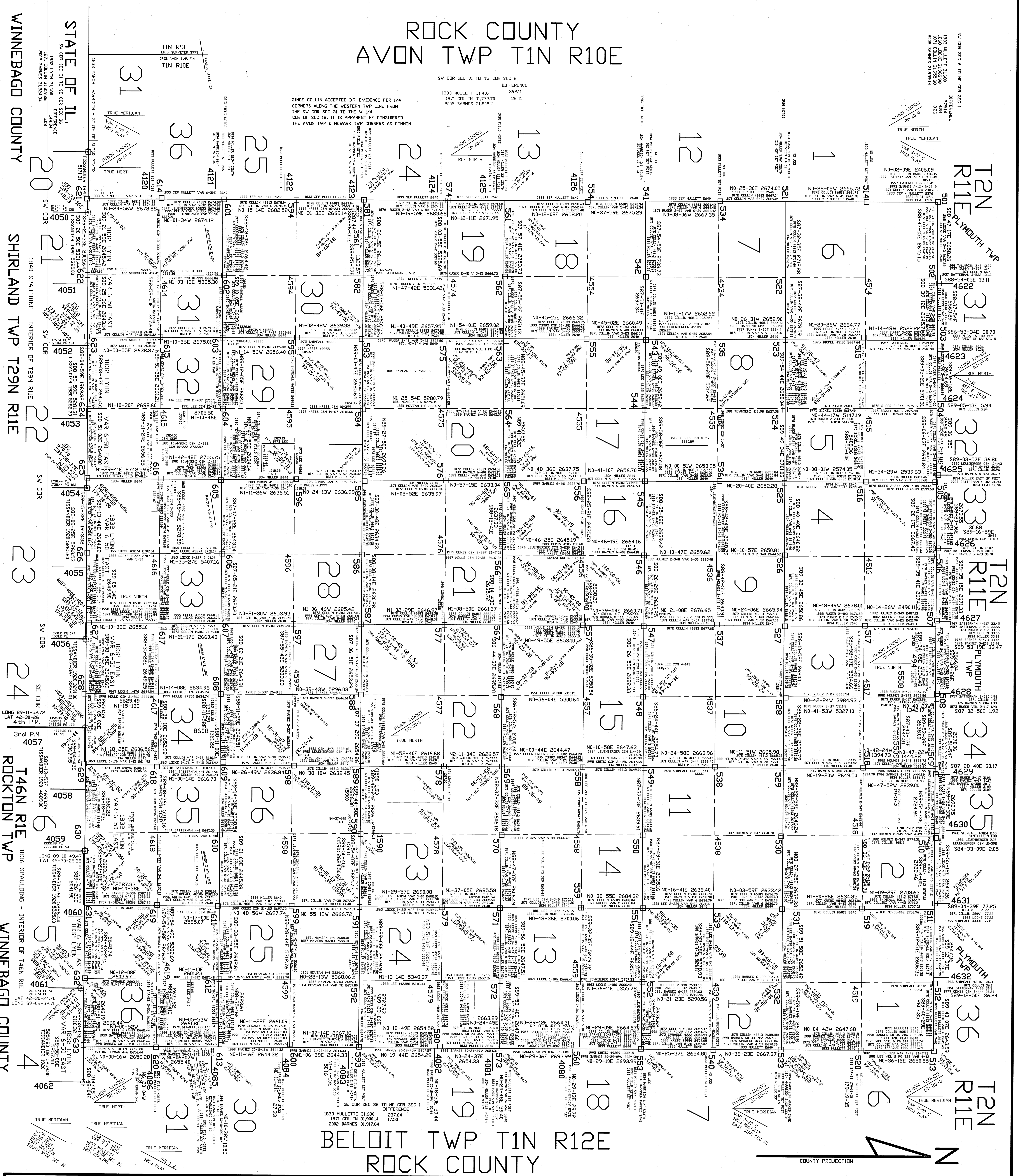


ROCK COUNTY  
AVON TWP T1N R10E

SV COR SEC 31 TO NW COR SEC 6  
DIFFERENCE  
1933 MALLETT 31.66 59511  
1871 COLLIN 31.77570 5241  
2002 BARNES 31.98111

SINCE COLLIN ACCEPTED B.T. EVIDENCE FOR 1/4  
CORNERS ALONG THE WESTERN TWP LINE FROM  
THE SW COR SEC 31 TO THE W 1/4  
COR OF SEC 18, IT IS APPROPRIATE TO CONSIDER  
THE AVON TWP & NEWARK TWP CORNERS AS COMMON



BELOIT TWP T1N R12E  
ROCK COUNTY

STATE OF IL.  
STATE OF WISCONSIN  
WINNEBAGO COUNTY  
SHIRLAND TWP T29N R1E  
T46N R1E  
ROCKTON TWP  
WINNEBAGO COUNTY

ROCK COUNTY COORDINATE SYSTEM:  
REFERENCE ELLIPSOID: GRS 80  
PROJECTION: TRANSVERSE MERCATOR  
DATUM: NAD83 (1991)  
ORIGIN LONGITUDE: -89 04 20  
ORIGIN LATITUDE: +41 56 40  
FALSE EASTING: 146,304.2926 (METERS)  
FALSE NORTHING: 0.00 (METERS)  
DESIGN ELEVATION: 274.321 (METERS)  
SCALE FACTOR: 0.999996000  
SEMI-MAJOR AXIS: 6,378,377.671  
SEMI-MINOR AXIS: 6,356,992.981403  
ECCENTRICITY: 0.08107174930486679  
FLATTENING: 298.2564764624123  
APPROXIMATE GROUND TO GRID RATIO FOR BELOIT: 1:320,000  
1 METER = 3.28083333333 U.S. SURVEY FOOT  
1 METER = 3.28083995951 INTERNATIONAL FOOT

FIELD NOTES 1868 LOCKE REMONUMENTATION OF PLYMOUTH  
PLACED OUT LINESHOTS  
FIELD NOTES 1871 COLLIN REMONUMENTATION OF NEWARK  
PLACED OUT LINESHOTS  
LEGEND  
COMPUTER PRINTOUTS:  
U.S. PUBLIC LAND SURVEY MONUMENT RECORD:  
REPORT:

ROCK COUNTY BOARD  
GOVERNING COMMITTEE  
PLANNING & DEVELOPMENT  
RICHARD DIT, CHAIR  
JACQUELINE WOOD, VICE CHAIR  
EVA HANDEL  
DEAN CONROD  
KENNETH JOHNSON  
GIS  
LAND RECORDS FUNDS PROVIDED  
THE COMPUTER HARDWARE &  
SOFTWARE FOR THIS MAP.  
HARDWARE - HP C TERMINAL

MAP 1 OF 5  
T1N R11E 4th P.M.  
ROCK COUNTY  
STATE OF WI.  
ROCK COUNTY SURVEYING DEPT.  
NEWARK TWP  
RECEIVED for filing per ss 59.60 (s)  
APR 19 2004  
Map # 14785  
Rock County Surveyor  
STATE OF WISCONSIN SS  
COUNTY OF ROCK  
AS COUNTY SURVEYOR OF THE COUNTY OF ROCK, I HEREBY DECLARE THAT THIS MAP AND REPORT WAS MADE UNDER MY DIRECT SUPERVISION AND DIRECTION AND THE INFORMATION HEREON DRAWN CORRECTLY REPRESENTS SAID SURVEYING AND BEST OF MY KNOWLEDGE AND BELIEF.  
REV. 1/25/2003  
JULY 13, 2004  
MISSISSAUGA, ONT.  
LAND SURVEYOR'S SEAL  
PLS #126  
ONLY COPIES SIGNED IN CONTRASTING INK ARE AUTHENTIC COPIES.  
DONALD BARNES, PLS